



MALAYSIA'S 100 MW SOLAR PROJECT



Yet another 100 MW solar project in Malaysia that we have secured and are currently handling. It marks a significant addition to our list and as of today, we have almost 20 projects in our track record.

The volume is also approximately 800 containers expected to be completed this year. It is indeed a lot of work and coordination but thankfully we have more than sufficient manpower and resources to do so. Our teams in HQ Port Klang as well as those in our branch offices will ensure smooth and timely coordination.





114 PACKAGES RECEIVED AND DELIVERED TO MALAYSIA'S CAR MANUFACTURER

For the manufacturing of the 2021 model of its Multi-Purpose Vehicle, there has been a series of goods imported from Japan. This round, we handled 114 packages comprising electrical parts, control panels, and plenty of spot welding robots as well as accessories.

Due to the Lunar New Year season, we stored all the cases in our warehouse for a couple of weeks. We had also been tasked to unpack the wooden crates prior to delivery. Upon arrival at site, we provided manpower and equipment to move all the items in to the plant.

The new model will be released this year, the first big technological upgrade in more than 10 years since its inaugural model.

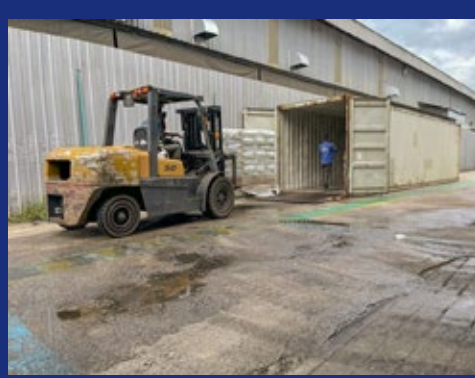


REGULAR IMPORT OF DATES (KURMA) FROM MIDDLE EAST



Import of dates from Middle East is rather common as date palm trees are a perennial crop in that region. Dates are commonly consumed in Malaysia all year long.

Our new client is a regular importer and a large supplier of dates in the East Coast of Peninsula Malaysia. As they are imported in carton boxes, our warehousing team assisted to palletise them for easier handling and transport.



We also recently secured a client specialising in the manufacturing of animal feeds. We have started receiving containers in our warehouse where we unstuff the supplements from the containers to segregate, pick and pack and store in our warehouse before distribution to various locations.

HANDLING OF ANIMAL FEEDS



WEEKLY TRIPS FROM PORT KLANG TO EAST COAST REGION

Regular transport trips from our warehouse in Port Klang to numerous locations in Peninsula Malaysia has recommenced. The delivery of construction materials is meant for an ongoing railway line that we have been handling and will continue until its full completion, expected to be in 2025.

AIR FREIGHT



138 DRUMS FOR OIL & GAS REFINERY

A total of 138 drums amounting to almost 23 tons was flown in from Newcastle Airport, UK to KLIA. The drums contained performance catalysts that are used in the manufacture of oil and gas products. Upon transferring, we delivered all the drums to the refinery site.



Cargo: Pipeline End Manifold (PLEM)
Dimension: L19.80 m x W16.60 m x H5.70 m
Weight: 102 ton



Loadout of oversized cargoes for offshore oil and gas projects is one of our areas of expertise. We ushered into the new year moving out a Pipeline End Manifold (PLEM) and pipe spools of various sizes in Port Klang.

Jack & Skid and Transport of Transformer



Megalift was tasked to send this unit of Transformer along with its accessories from Manjung to Thailand. At the site, we jacked and skidded the Transformer from its foundation onto our multi-axle trailer. We used our drop deck trailer to cater for its over height. From Manjung, we rode for almost 300 km to Bukit Kayu Hitam before our Thai partner took over.



Cargo: Transformer
Dimension: L5.10 m x W3.80 m x H4.50 m
Weight: 64 ton